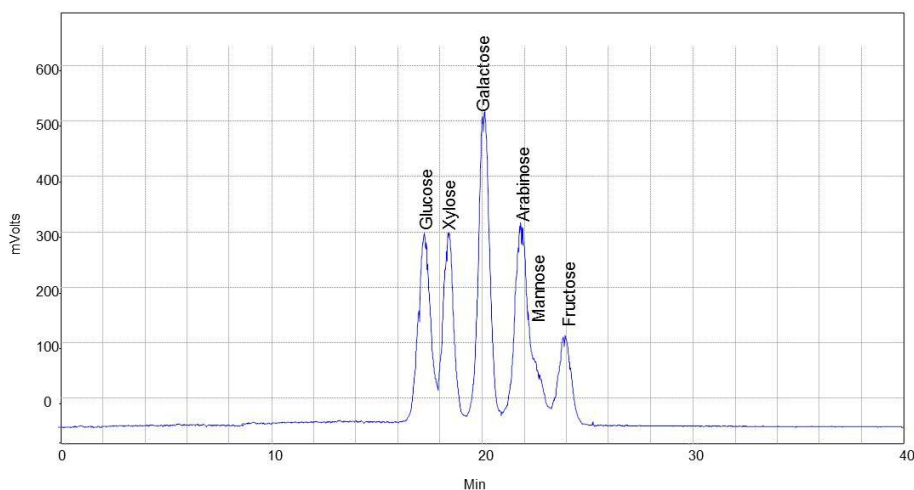
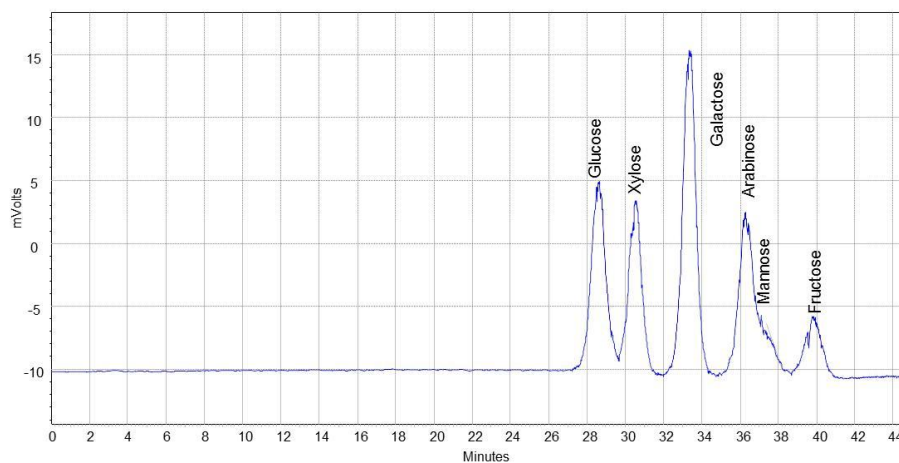




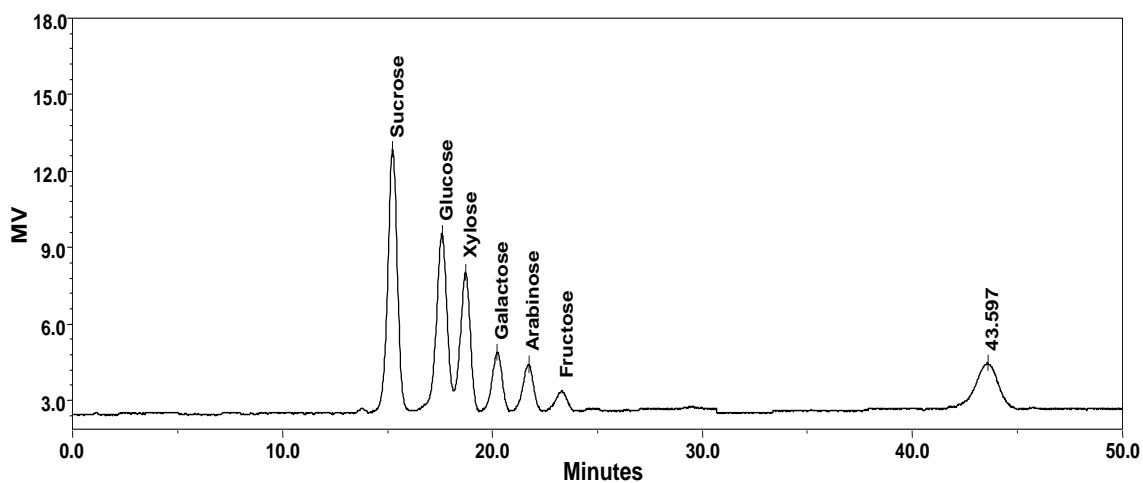
Analysis of sugar mixture on Carbomix[®]-Pb (10 μ m, 5%, 7.8x300 mm)



Column: Carbomix Pb[®]-NP10 (10 μ m, 5% crosslinkage, 7.8x300 mm)
Mobile Phase: water
Temperature: 75 °C
Flow Rate: 0.5 mL/min
Detection: ELSD: drift tube temp.: 80 °C; gas flow rate: 2.0 L/min
Injection volume: 5 μ L



Column: Carbomix Pb[®]-NP10 (10 μ m, 5% crosslinkage, 7.8x300 mm)
Mobile Phase: water
Temperature: 75 °C
Flow Rate: 0.3 mL/min
Detection: ELSD: drift tube temp.: 80 °C; gas flow rate: 2.0 L/min
Injection volume: 5 μ L



Column: Carbomix Pb[®]-NP10 (10 μm, 5% crosslinkage, 7.8x300 mm)
Mobile Phase: water
Temperature: 75 °C
Flow Rate: 0.5 mL/min
Detection: RI
Injection volume: 20 μL

Keywords: Carbohydrate, Carbomix, lead form, Sucrose, Glucose, Xylose, Galactose, Arabinose, mannose, fructose